



Shire of Denmark

Quarterly Performance Review July 2021 to December 2021



Agenda

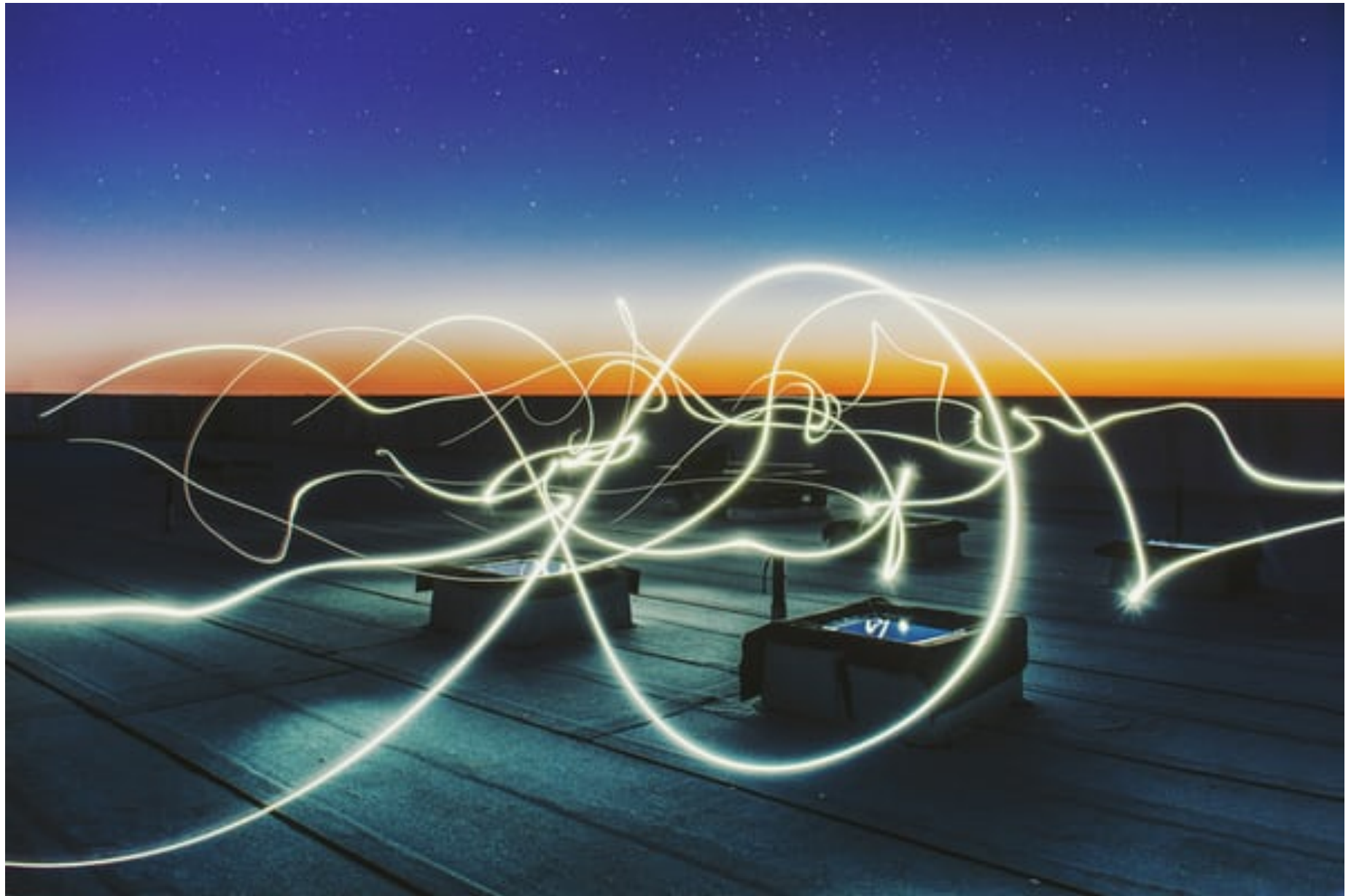


Energy Overview

Includes an overview of energy, electricity, and gas over the past few years. Also, review the assets with the biggest increases and decreases since the same time last year.

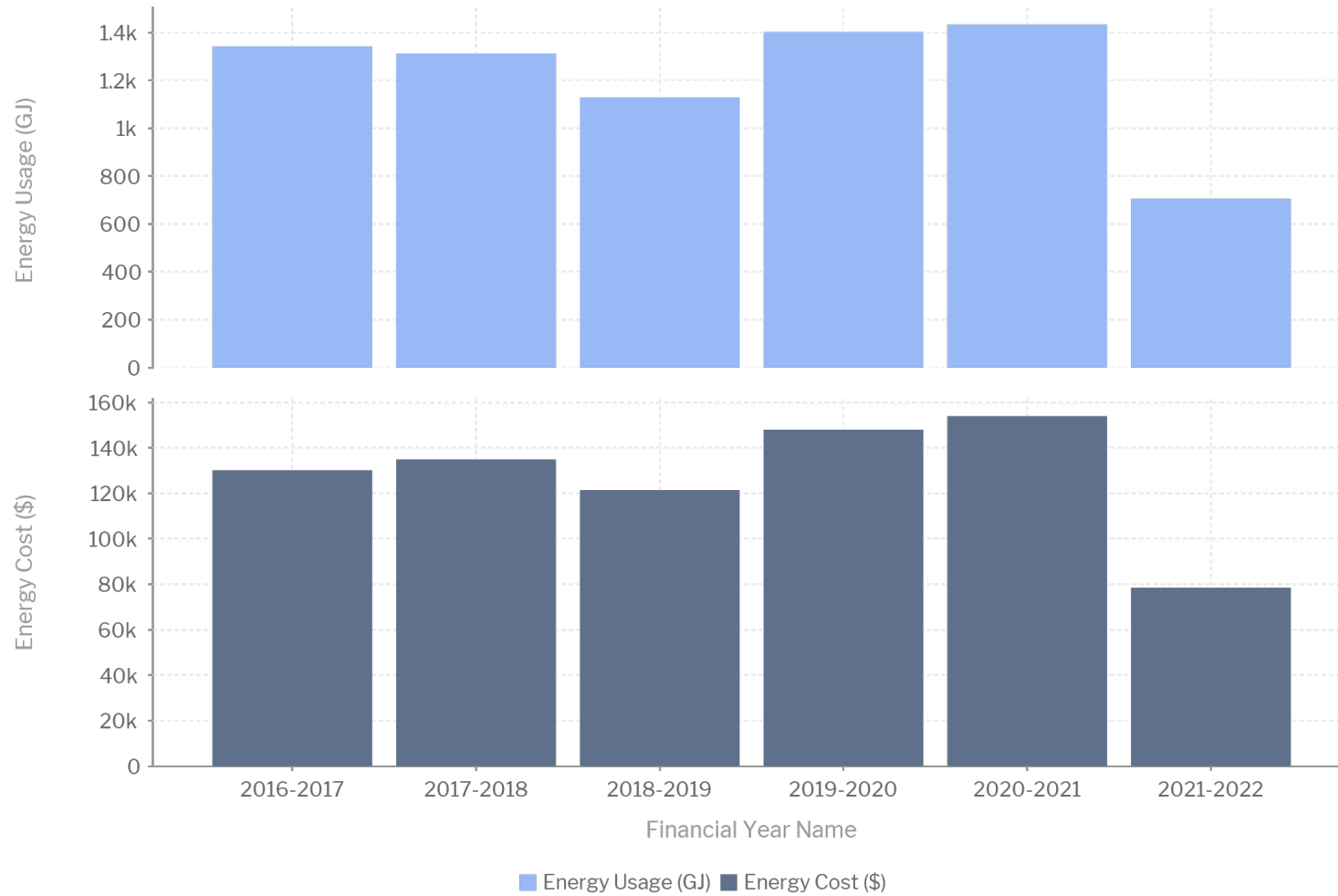
Water Overview

Overview of water of the past few years, including assets with the biggest increases and decreases since the same time last year.





Annual Energy Consumption and Costs



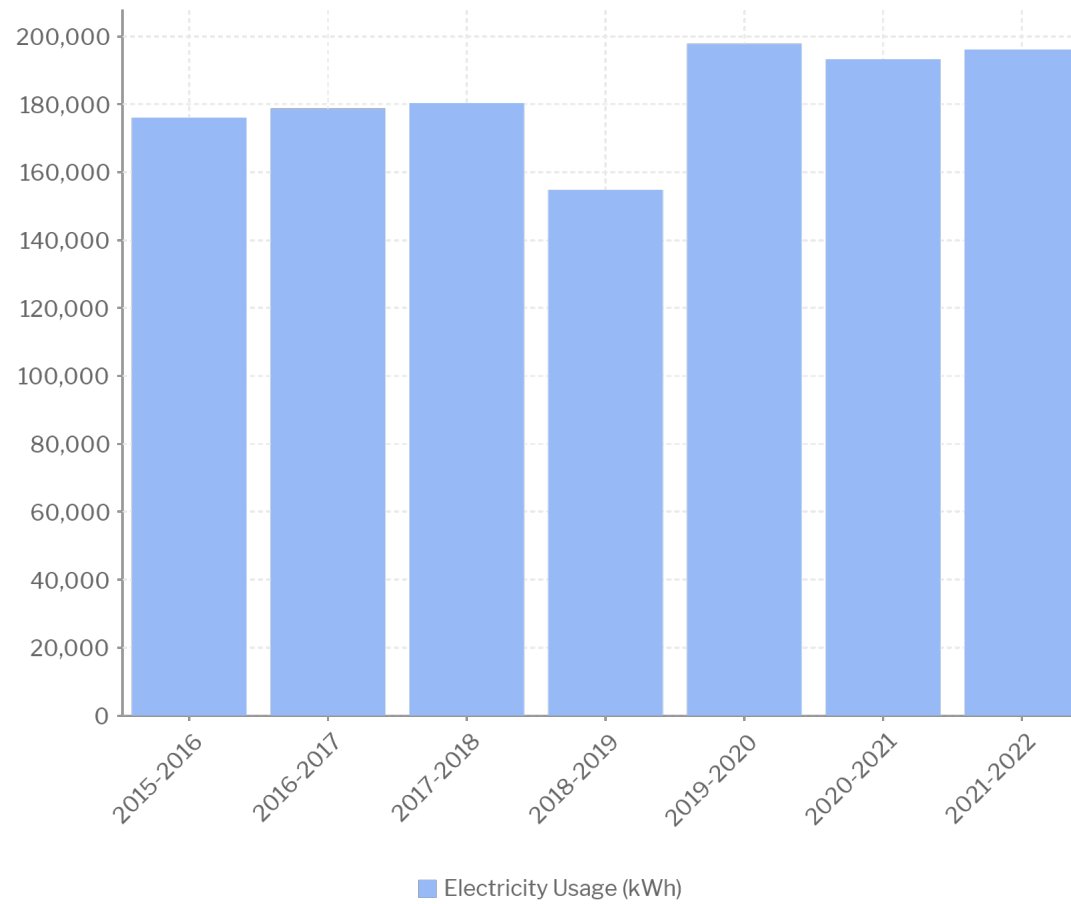
current years data reflects YTD figures



Electricity Consumption - Breakdown



Electricity Consumption (kWh)





Assets with the Biggest Electricity Usage Increase



Financial Year Name	Asset Name	Electricity Usage (kWh)	Usage Change Since Previous Year (KWh)	Percent Usage Change Since Previous Year (%)	Previous Financial Year	Previous Year Electricity Usage (kWh)
2021-2022	Denmark High School Oval Bore	6,935KWh	3,891	128%	2021	3,044KWh
2021-2022	Recreation Centre	18,125KWh	3,432	23%	2021	14,693KWh
2021-2022	CEO's House	4,540KWh	3,038	202%	2021	1,502KWh
2021-2022	McLean Park	19,157KWh	2,238	13%	2021	16,919KWh
2021-2022	Depot	11,188KWh	563	5%	2021	10,625KWh
2021-2022	MCINTOSH LANDFILL	2,080KWh	387	23%	2021	1,693KWh
2021-2022	THORNTON PARK	1,677KWh	373	29%	2021	1,304KWh
2021-2022	MUSEUM	1,432KWh	360	34%	2021	1,072KWh
2021-2022	Nornalup Community Hall	2,037KWh	189	10%	2021	1,848KWh
2021-2022	AIRSTRIP	393KWh	149	61%	2021	244KWh



Assets with the Biggest Electricity Usage Decrease



Financial Year Name	Asset Name	Electricity Usage (KWh)	Usage Change Since Previous Year (KWh)	Percent Usage Change Since Previous Year (%)	Previous Financial Year	Previous Year Electricity Usage (kWh)
2021-2022	Shire Administration Centre	26,146KWh	-7,138	-21%	2021	33,284KWh
2021-2022	Surf Life Saving Club	5,045KWh	-2,143	-30%	2021	7,188KWh
2021-2022	Peaceful Bay Beach Toilets Pump	1,340KWh	-1,052	-44%	2021	2,392KWh
2021-2022	Civic Centre, Library & Old Resource Centre	10,310KWh	-830	-7%	2021	11,140KWh
2021-2022	EAST DENMARK BUSH FIRE BRIGADE	1,351KWh	-259	-16%	2021	1,610KWh
2021-2022	Water Supply Pump Peaceful Bay	2,014KWh	-185	-8%	2021	2,199KWh
2021-2022	Street Lighting	67,919KWh	-136	0%	2021	68,055KWh
2021-2022	TV TOWER	954KWh	-107	-10%	2021	1,061KWh
2021-2022	OCEAN BEACH BUSH FIRE BRIGADE	562KWh	-78	-12%	2021	640KWh
2021-2022	SHADFORTH/SCOTSDALE BUSH FIRE BRIGADE	342KWh	-71	-17%	2021	413KWh



Cost of Power - Electricity



Asset Name	Rank of Electricity Usage (kWh)	Electricity Usage (kWh)	Rank of Electricity Cost (\$)	Electricity Cost (\$)	Rank of Electricity Cost per kWh (\$)	Electricity Cost per kWh (\$)
Street Lighting	1	34,098	1	\$17,517.00	1	\$0.51
Shire Administration Centre	2	11,903	2	\$3,635.00	6	\$0.31
McLean Park	3	9,901	3	\$2,873.00	9	\$0.29
Recreation Centre	4	8,706	4	\$2,546.00	8	\$0.29
Depot	5	5,005	5	\$1,530.00	5	\$0.31
Civic Centre, Library & Old Resource Centre	6	4,846	6	\$1,486.00	4	\$0.31
Surf Life Saving Club	7	3,005	7	\$917.00	7	\$0.31
Denmark No. 3 Railway Station	8	2,228	8	\$749.00	3	\$0.34
Denmark High School Oval Bore	9	2,218	9	\$600.00	10	\$0.27
Water Supply Pump Peaceful Bay	10	1,540	10	\$579.00	2	\$0.38





Water Consumption - Breakdown



No results returned.



Assets with the Biggest Water Usage Increase



Financial Year Name	Asset Name	Water Usage (kL)	Consumption Change Since Previous Year (kL)	Percent Consumption Change Since Previous Year (%)	Previous Financial Year	Previous Year Water Usage (kL)
2021-2022	Old Saleyards	1,453kL	489	51%	2021	964kL
2021-2022	McLean Park	527kL	335	174%	2021	192kL
2021-2022	Surf Life Saving Club	638kL	217	52%	2021	421kL
2021-2022	Shire Staff Rental Chiltern Road	270kL	167	162%	2021	103kL
2021-2022	Strickland Street Median Strip	181kL	152	524%	2021	29kL
2021-2022	Denmark Arts Council and Cottage Crafts	182kL	136	296%	2021	46kL
2021-2022	Depot	837kL	88	12%	2021	749kL
2021-2022	Civic Centre, Library & Old Resource Centre	316kL	85	37%	2021	231kL
2021-2022	Morgan Richards Community Centre (former Old Hospital)	142kL	59	71%	2021	83kL
2021-2022	Denmark Arts Centre Precinct (former Frail Aged Lodge)	72kL	33	85%	2021	39kL



Assets with the Biggest Water Usage Decrease



Financial Year Name	Asset Name	Water Usage (kL)	Consumption Change Since Previous Year (kL)	Percent Consumption Change Since Previous Year (%)	Previous Financial Year	Previous Year Water Usage (kL)
2021-2022	Zimmerman Street Standpipe	741kL	-807	-52%	2021	1,548kL
2021-2022	BERRIDGE PARK	1kL	-611	-100%	2021	612kL
2021-2022	Howe Road Standpipe	4kL	-566	-99%	2021	570kL
2021-2022	House at 23 Riverbend Lane Scotsdale	33kL	-187	-85%	2021	220kL
2021-2022	SPIRIT OF PLAY COMMUNITY SCHOOL	83kL	-107	-56%	2021	190kL
2021-2022	Kwoorabup Community Park	36kL	-91	-72%	2021	127kL
2021-2022	Recreation Centre	137kL	-47	-26%	2021	184kL
2021-2022	Cemetery	10kL	-21	-68%	2021	31kL
2021-2022	PODDY SHOT TOILETS	56kL	-18	-24%	2021	74kL
2021-2022	CEO's House	12kL	-14	-54%	2021	26kL



Knowledge Centre - **my.azility.co/KnowledgeCentre/home**

Contact us - support@azility.co