

Synergy NaturalPower

Supporting renewable business energy.





Synergy NaturalPower is an accredited renewable energy solution that can help your business achieve its renewable and emissions targets.

When you purchase NaturalPower, Synergy matches your electricity usage with renewable energy that is accredited through a national scheme and meets strict environmental criteria.



Promote

- Show that your business is environmentally-conscious and supports Australia's renewable energy sector.
- Promote your use of GreenPower* by using the GreenPower logo on your website and marketing materials.
- Your business can also be featured on the GreenPower* website and Facebook page.



Acknowledgement of Country

Synergy acknowledges the Traditional Custodians of the lands on which we walk, work and live. We acknowledge and pay our respect to Elders past, present and emerging as we work together for a united future.

Synergy NaturalPower is accredited under the national GreenPower program, which means that when your business purchases NaturalPower from Synergy, Synergy will purchase Large-scale Generation Certificates (or LGCs) on your behalf from nationally accredited GreenPower renewable energy sources.

The LGCs purchased will match the amount of NaturalPower contribution, and are derived from energy produced from accredited renewable sources and fed back into the existing electricity network.

You can choose how much you want to offset. When you select your NaturalPower contribution you can select increments of 25% up to 100%. The extra you pay, is in addition to your daily electricity charges.

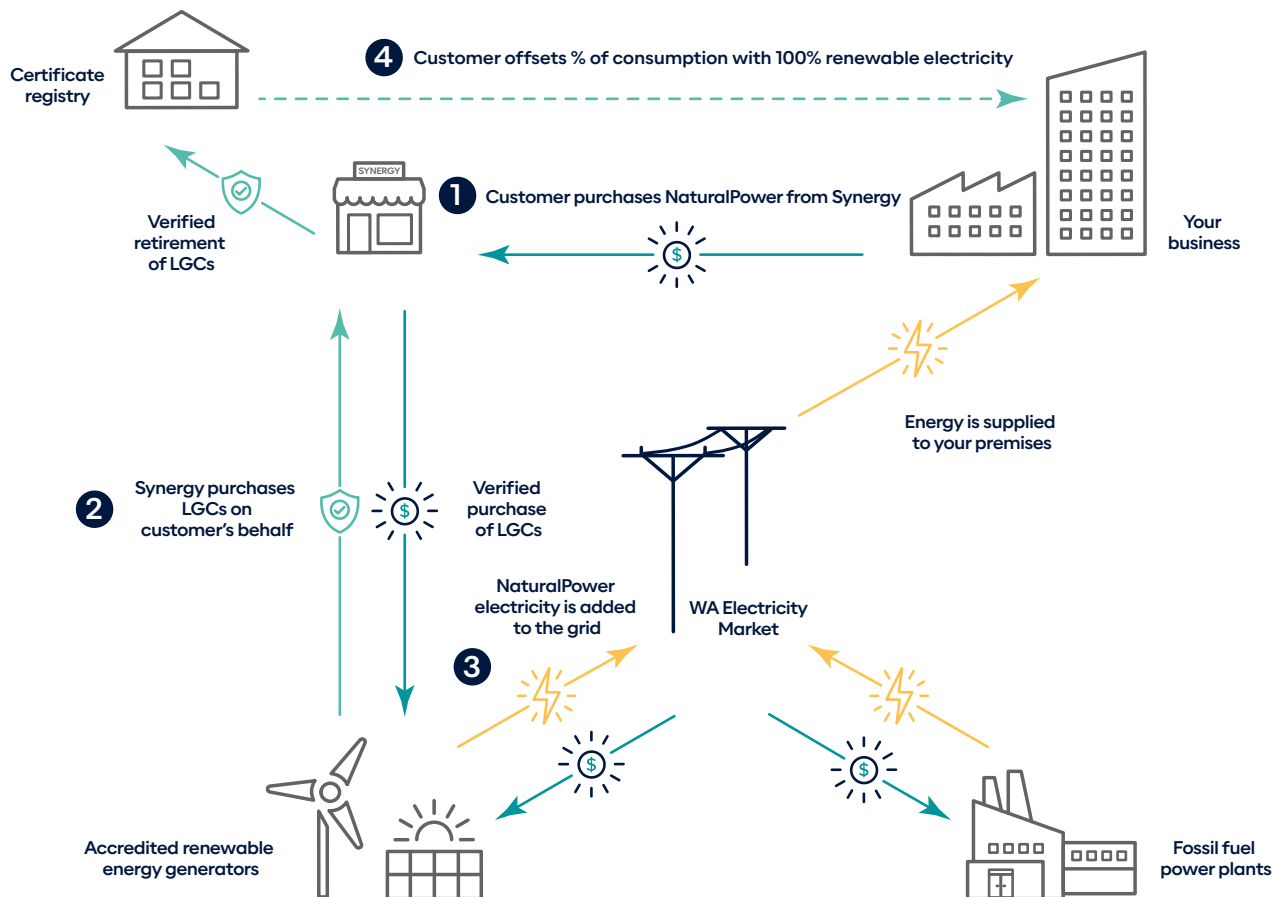


Benefits

- Improve your building's Green Star Performance Ratings and NABERS rating.
- Support Australia's renewable energy sector and expand your commitment to using renewable energy in your business.
- You increase the demand for renewable electricity in the grid which supports future investment in these sources.
- Your NaturalPower contribution may help you to offset your carbon emissions.

*Eligibility criteria applies.

How does it work?



1. Customer purchases NaturalPower from Synergy

- Synergy NaturalPower is accredited under the national GreenPower program, a voluntary government accreditation program that guarantees your electricity use is offset with power from renewable electricity sources.
- Synergy will ensure the process is seamless, with no interruption to your service, making switching to renewable energy easy.

2. Synergy purchases LGCs on customer's behalf

- When you choose NaturalPower through Synergy, you pay more than your usual tariff and we buy LGCs on your behalf. These LGCs are from nationally-accredited GreenPower renewable energy sources which meet strict environmental criteria.
- Certificates are retired for every unit of GreenPower sold, preventing any double-counting or duplication. Each year, Synergy is independently audited to ensure credibility of LGCs.

NaturalPower electricity is added to the grid

- The electricity is generated by accredited renewable energy sources and fed back into the electricity network – so your contribution helps to increase the amount of electricity from renewable energy sources running through the grid.

3. Customer offsets consumption with 100% renewable electricity

- Synergy guarantees that the NaturalPower contribution your business purchases, comes from renewable energy sources that meet strict environmental criteria. GreenPower ensures that no greenwashing or double-counting of environmental benefits occurs through its two-tier annual audit.
- When your business purchases NaturalPower from Synergy, you increase the amount of renewable electricity demanded in the grid, which supports renewable electricity projects.

Why renewable energy?



Support the Australian renewable energy sector

Purchasing renewable energy products is a great way to reduce your business' impact on the environment and support the growth of renewable energy in Australia.

Renewable energy projects create jobs for Western Australians and support regional businesses.



Reduce your energy footprint

The electricity sector accounts for approximately one-third of Australia's greenhouse gas emissions. The good news is, this percentage is decreasing each year, as more renewable electricity is generated.

Your business can reduce its greenhouse gas emissions by choosing renewable energy.



Contribute to a healthy future

Synergy can provide a renewable energy solution to help achieve your business' renewables and emissions targets of the future. When you purchase NaturalPower, Synergy guarantees your contribution is coming from renewable energy sources that meet strict environmental criteria.

See how much you could offset your CO2 emissions by with our handy emissions calculator. Visit synergy.net.au/CommercialGreen

Synergy utilises a total of 5 local accredited sites to source LGCs for NaturalPower

- **Greenough River Solar Farm:** A joint venture with Bright Energy Investments, with a total production capacity of 40MW.
- **Collgar Wind Farm:** Located 25km south-east of Merredin, with a total production capacity of 222 MW.
- **Denmark Community Wind Farm:** A community-owned wind farm located 10km south of Denmark, with a total production capacity of 1.6MW.
- **Mt Barker Community Wind Farm:** A community-owned wind farm located 4km from the Mt Barker township and 50km from the coast, with a total production capacity of 2.4MW.
- **Warradarge Wind Farm:** A joint venture with Bright Energy Investments, located near Eneabba, with a total production capacity of 180MW.

